



INSTALL INSTRUCTIONS FOR 10-1013

[PRINT](#)

BEFORE YOU START

- Please read the entire product guide before proceeding
- Ensure all parts are present.
- If you are missing any parts, please call or text us at (909)-675-1313
- Do not work on your vehicle while the underbody components are hot.
- Make sure the vehicle is in park or the parking brake is set if you plan on working on the ground. If working on a lift, make sure the vehicle is lifted safely and securely.

REQUIRED TOOLS

Flathead Screwdriver

15mm Socket

Ratchet

12" Driver Extension

Fuel Line Disconnect Tool - 3/8" and 1/2"

Drain your original fuel tank before beginning the S&B Installation process. S&B Tanks recommends removing only an empty or near empty tank for your safety. We recommend using a siphon or electronic transfer pump.

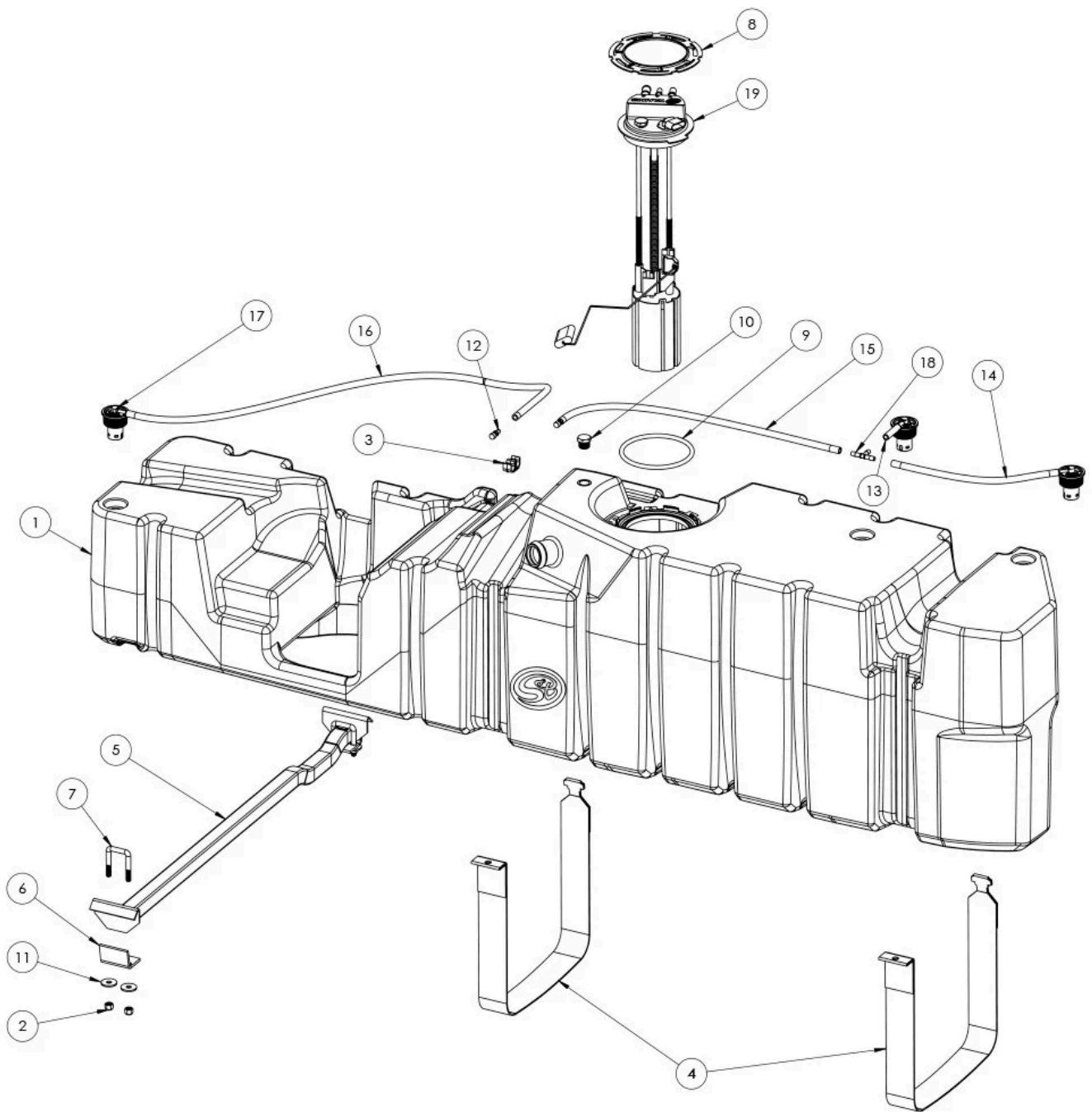
Disconnect and isolate both of the negative battery cables

Before installing S&B Tank, conduct pressure test to ensure o'ring is properly seated.

In-bed Auxiliary Fuel Tanks will void the Lifetime Warranty.

Nozzle at high flow fuel station may continue to "click off". Tank is designed to work at regular fuel stations.

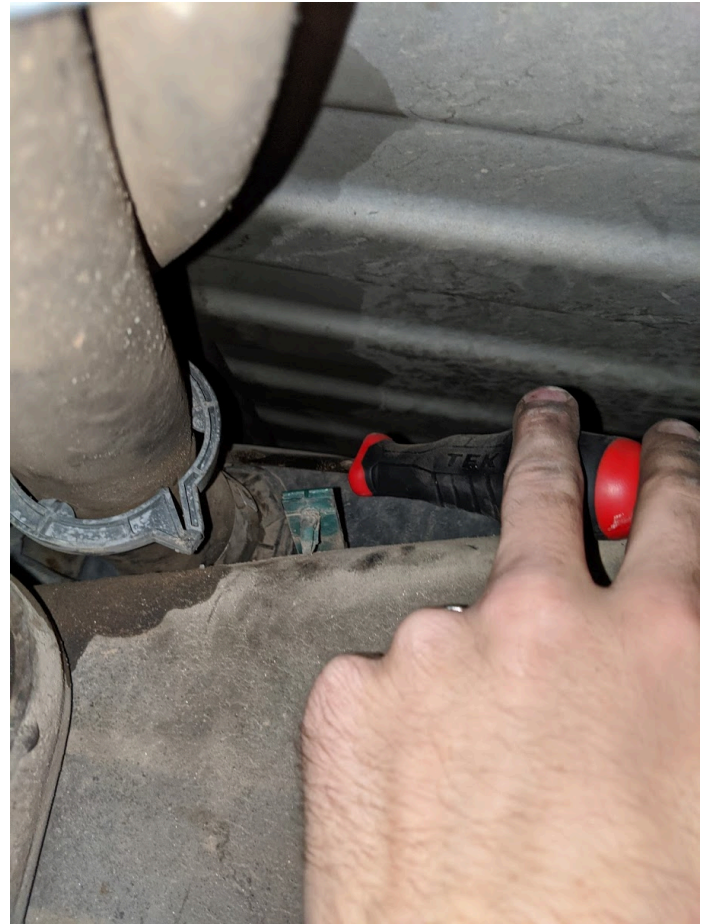




ITEM NO.	PART NUMBER	DESCRIPTION	QTY.
1	10-1013	HIGH CAPACITY REPLACEMENT FUEL TANK	1
2	A11498-00	NUT, HEX NYLOCK, 3/8-16, SS	4
3	T11017-00	FUEL LINE HOLDER (2 LINES)	1
4	T11026-00	FUEL TANK STRAP FOR 10-1006	2
5	T11030-00	CROSS BAR TANK SUPPORT FOR 10-1006	1
6	T11032-00	CROSSBAR CLIP C	2
7	T11033-00	U-BOLD FOR CROSSBAR	2
8	T11083-00	RETAINING/LOCKING RING	1
9	T11094C-00	O-RING, 8mm CS, NBR, 50 DURO	1
10	T11125-00	1/2\"NPT PLUG	1
11	T11130-00	STAINLESS STEEL WASHER FOR 38 SCREW	4
12	T11141-00	CASE VENT-BREATHER	2
13	T11149-02	5/16\" FUEL HOSE 2'	1
14	T11149-15	FUEL HOSE, 5/16\" X 15', BK	1
15	T11149-30	FUEL HOSE, 5/16\" X 30', BK	1
16	T11149-50	FUEL HOSE, 5/16\" X 50', BK	1
17	T11226-00	OE STYLE ROLLOVER VENT VALVE	3
18	T11344-00	TEE CONNECTOR FOR 5/16\" ID HOSE	1

STEP 1

Remove the filler hose from the tank or at the hose clamp connecting the hose to the metal filler neck



STEP 2

If your truck came equipped with a skid plate, remove it with a 13mm socket.



STEP 3

With fuel line disconnect tools, disconnect the fuel feed and return lines above the fuel cooler.



STEP 4

With a jack supporting the bottom of the tank. Use a 15mm socket to remove the front and rear straps.



STEP 5 FOR 10-1010 TANK

Remove the electrical connector by sliding out the grey tab and depressing the top bottom.



STEP 5 FOR 10-1013 TANK

Remove the electrical connector by releasing the tab on the side and pulling out on the connector.



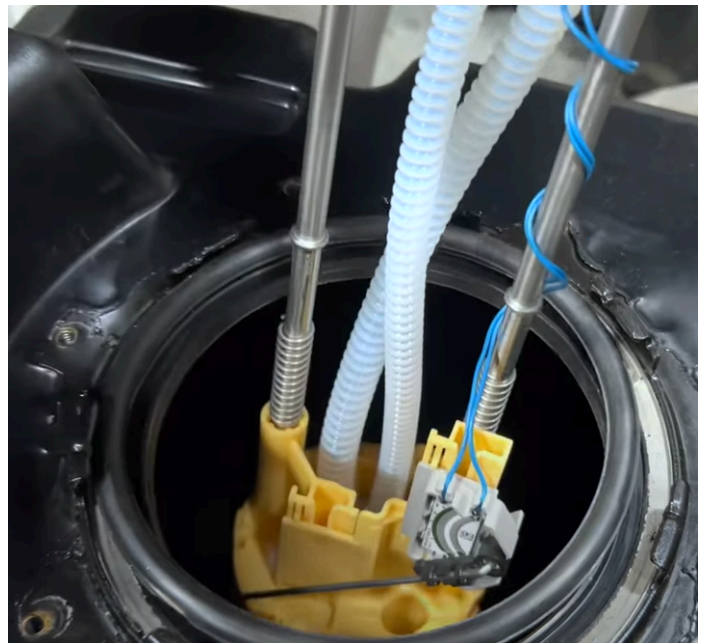
STEP 6 FOR 10-1010

Remove the hose clamp securing the fuel vent hose to the sending unit barb.



STEP 7

Remove the OEM fuel tank. Place the included S&B o'ring into the o'ring groove and install the float onto the sending unit once the bucket is through the opening in the S&B Tank.



STEP 8

With the tab on the sending unit facing the arrow on the S&B Tank, install the included o'ring over the sending unit flange. Either use a dead blow/pry bar or fuel locking ring tool to hit the ring clockwise until it passes under the indentation in the ring on the S&B Tank.



STEP 8B

This is what the ring looks like in the locked position.



STEP 9

Transfer the feed and return line from the OEM tank to the S&B Tank



STEP 10 FOR 10-1006

Lift the tank into place. Throw the 5/16" ROV hoses over the frame rail to prevent them from getting pinched in between a crossmember when installing the tank. Reconnect the electrical connector and vent hose to the sending unit.



STEP 11

Route the hoses over the crossmembers and to the filler hose



STEP 12

Reconnect the filler



STEP 13

Install the 2 S&B fuel tank straps.



STEP 14

Install the S&B support bar in front of the S&B Tank. The hooks should be over the inside lip of the frame rail. Then by pressing up on the tank and pushing on the bar, slide the bar under the S&B Tank until it is in the groove on the S&B Tank.



STEP 15

To secure the S&B support bar to the frame. Slide the u-bolts over the bar and slide as close to the frame as possible. Then install the clips, washers and lock nuts onto the u-bolt.



STEP 16 FINAL CHECKLIST

This final checklist is very important.

#1 Make sure all bolts and nuts are safely fastened and torqued.

#2 Ensure there is proper driveshaft clearance.

#3 Double check fuel line connections, the electrical connection as well as the vent and fill lines.

#4 Lastly, fill the tank full and check for any leaks. If you have any questions, call or text us at [909.675.1313](tel:909.675.1313)



