



## INSTALLATION INSTRUCTIONS

300 W. Pontiac Way Clovis, CA 93612 toll free: 1-800-445-3767 web: www.belltech.com

### 5600 FRONT ANTI SWAY BAR CHEVY TAHOE / YUKON

**Thank you for being selective enough to choose our high quality BELLTECH PRODUCT. We have spent many hours developing our line of products so that you will receive maximum performance with minimum difficulty during installation.**

- Note: Confirm that all of the hardware listed in the parts list is in the kit. **Do not** begin installation if any part is missing. Read the instructions thoroughly before beginning this installation.
- Warning:** **DO NOT** work under a vehicle supported by only a jack. Place support stands securely under the vehicle in the manufacturer's specified locations unless otherwise instructed.
- Warning:** **DO NOT** drive vehicle until all work has been completed and checked. Torque all hardware to values specified.
- Reminder: Proper use of safety equipment and eye/face/hand protection is absolutely necessary when using these tools to perform procedures!
- Note: It is very helpful to have an assistant available during installation.

#### RECOMMENDED TOOLS:

- Properly rated floor jack, support stands, and wheel chocks
- Combination wrench set
- Torque wrench: *0-75 lb ft. range*
- Ratcheting socket wrench and socket sets
- Safety Glasses

#### KIT INSTALLATION

1. Open the hardware kit and remove all of the contents. Refer to the part list (Page 3) to verify that all parts are present.
2. Park the vehicle on a smooth, level concrete or seasoned asphalt surface and activate the parking brake. Block the FRONT wheels of the vehicle with appropriate wheel chocks; making sure the vehicle's transmission is in 1<sup>st</sup> gear (manual) or "Park" (automatic).
3. Using a properly rated floor jack, lift the REAR wheels of the vehicle off the ground. Place support stands, rated for the vehicle's weight, and in the factory specified locations. Refer to the vehicle Owner's Manual. Prior to lowering the vehicle onto the stands, make sure the supports will securely contact the chassis.
4. It is very important that the vehicle is properly supported during this installation to prevent personal injury and chassis damage! Make sure that the supports stands are properly placed prior to performing the following procedures. We **DO NOT RECOMMEND** using wheel ramps while performing this installation.
5. Slowly lower the vehicle onto the stands and, before placing the vehicle's entire weight on them, again check that they properly and securely contact the chassis as described above. Check for possible interference with any lines, wires, cables, or other easily damaged components.

6. Remove the end links from the ends of the original equipment Anti-Sway Bar. Remove the bushing bracket as well. Note the position of the Anti-Sway Bar in the vehicle to ease the installation of your new Belltech Anti-Sway Bar. Remove the original equipment Anti-Sway Bar from the vehicle.
7. Thoroughly lubricate the **inside** of your new urethane bushings using the lubricant supplied in the kit. Place the bushings onto the new Anti-Sway Bar. Refer to the original equipment Anti-Sway Bar as to proper bushing location.
8. Position your new Belltech Anti-Sway Bar on the vehicle in the original location (Note: It may be necessary to have the suspension at ride height in order for the bar to clear the upper control arms when installing) and assemble the end links as shown in the diagram, but **do not** tighten yet.
9. Assemble the brackets onto the Sway Bar pivot bushings and secure the Sway Bar to the frame using the original equipment bolts, tighten to 18 ft/lbs. With the suspension at ride height, tighten the end links until the grommets begin to bulge, but do not crush them.
10. Go over the entire installation procedure and make sure all the bolts and nuts are properly tight. Install the wheels.

All hardware being fastened to the vehicle's original fastening points should be torqued to the proper specifications. To prevent chassis damage, never over-torque the hardware.

11. Check that all components and fasteners have been properly installed, tightened and torqued.
12. Check brake hoses, and other components for any possible interference.
13. Installation is complete.
14. Lift vehicle and remove support stands. Carefully lower vehicle to ground.
15. Immediately test-drive the vehicle in a remote location so that you can become accustomed to the revised driving characteristics and handling. Be aware that the vehicle will handle substantially different now that it has been modified.
16. Check all of the hardware and re-torque at intervals for the first 10, 100, 1000 miles.

**WD-40™** is recommended to help remove excess lubricant. Re-greasing the pivot bushings should be performed at regular intervals. Climate and driving conditions will govern the time between services. Remember to check all hardware while performing bushing maintenance.

## PART LIST FOR 5600

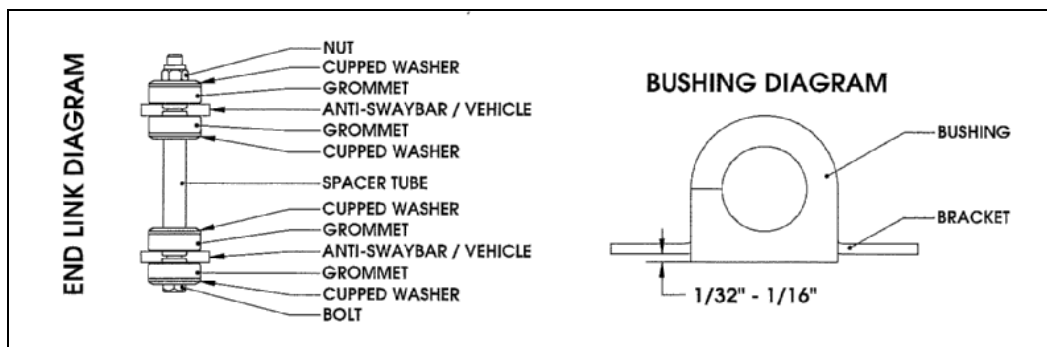
### FRONT ANTI-SWAY BAR KIT

PART No.	DESCRIPTION	QTY.
5600-300	Front Anti Sway Bar	1
113245	Pivot Bushing	2
113000	End Link Grommet	8
112430	Spacer Tube 1/2" O.D. x .049WALL x 3 1/2"L	2
110255	3/8-16" Ny Lock Nut	2
112144	3/8"-16 x 8" HHCS	2
112502	Cupped Washer Large	8
55000-10	Grease Pack	1

## **! BELLTECH INSTALLATION TIPS**

### **LUBRICATION**

Pre-lubricating a bushing before its installed is important because the lubrication will greatly reduce noise and it will increase bushing life. Belltech recommends you use Molybdenum disulfide. This will help protect the inside surface of the bushing and will last longer than most types of grease. Thoroughly lubricate the inside of the bushing with this grease.



### **BUSHING INSTALLATION**

Make sure an amount of 1/32" to 1/16" of the bushing is showing when you install it onto the bracket. See the diagram above. If the bushing is showing more than 1/16" then use a sander or a sheet of coarse grit sand paper to shave it down to the proper height. In most applications when installing the new bushings on your Belltech Anti-Sway Bar you may refer to your original equipment Anti-Sway Bar to locate the proper location.