



INSTALLATION INSTRUCTIONS

300 W. Pontiac Way Clovis, CA 93612 toll free: 1-800-445-3767 web: www.belltech.com

5524 REAR ANTI-SWAY BAR 82-94 S-10 / S-15 Blazer / Jimmy

Thank you for being selective enough to choose our high quality BELLTECH PRODUCT. We have spent many hours developing our line of products so that you will receive maximum performance with minimum difficulty during installation.

- Note: Confirm that all of the hardware listed in the parts list is in the kit. Do not begin installation if any part is missing. Read the instructions thoroughly before beginning this installation.
- Warning: **DO NOT** work under a vehicle supported by only a jack. Place support stands securely under the vehicle in the manufacturer's specified locations unless otherwise instructed.
- Warning: **DO NOT** drive vehicle until all work has been completed and checked. Torque all hardware to values specified.
- Reminder: Proper use of safety equipment and eye/face/hand protection is absolutely necessary when using these tools to perform procedures!
- Note: It is very helpful to have an assistant available during installation.

RECOMMENDED TOOLS:

- Properly rated floor jack, support stands, and wheel chocks
- Combination wrench: 14mm
- Ratcheting socket wrench and sockets: 14mm
- Safety Glasses

Note: It is very helpful to have an assistant available during installation.

SAFETY REMINDER: PROPER USE OF SAFETY EQUIPMENT AND EYE/FACE/HAND PROTECTION IS ABSOLUTELY NECESSARY WHEN USING THESE TOOLS TO PERFORM PROCEDURES!

KIT INSTALLATION

Open the hardware kit and remove all of the contents. Refer to the part list (Page 3) to verify that all parts are present.

1. Park the vehicle on a smooth, level concrete or seasoned asphalt surface and activate the parking brake. Block the FRONT wheels of the vehicle with appropriate wheel chocks; making sure the vehicle's transmission is in 1st gear (manual) or "Park" (automatic).
2. Using a properly rated floor jack, lift the front wheels of the vehicle off the ground. Place support stands, rated for the vehicle's weight, in the factory specified locations. Refer to the vehicle Owner's Manual. Prior to lowering the vehicle onto the stands, make sure the supports will securely contact the chassis.

It is very important that the vehicle is properly supported during this installation to prevent personal injury and chassis damage! Make sure that the supports stands are properly placed prior to performing the following procedures. We **DO NOT RECOMMEND** using wheel ramps while performing this installation.

3. Slowly lower the vehicle onto the stands and, before placing the vehicle's entire weight on them, again check that they properly and securely contact the chassis as described above. Check for possible interference with any lines, wires, cables, or other easily damaged components.
4. Thoroughly lubricate the **inside** of the new polyurethane bushings using the grease provided. Place the U-bolts on the axle, (see photo 2). Then attach the under support plate, and the bushing brackets with sway bar. (Position the bar with the Sway Bars moment arms resting on the topside of the leaf spring). Attach the nuts on the U-bolt, finger tighten only. Once located, rotate the bushings slightly to evenly spread the lubricant.

WD-40™ is recommended to help remove excess lubricant. Re-greasing the pivot bushings should be performed at regular intervals. Climate and driving conditions will govern the time between services. Remember to check all hardware while performing bushing maintenance.

5. Locate the holes used for the end link bracket hardware on the frame (see photo 1). Attach the bracket leaving it slightly loose, (just loose enough so it will turn). Installing the end-link bolt, take the end-link bolt, apply a cupped washer, then a grommet, and place that through the top of the bracket. Place another grommet, a 3/8 flat washer, and then another grommet; link that to the end-link hole on sway bar. Finally apply last grommet, cupped washer, and nut. Tighten down until grommets just start to bulge. (Photo 3)

Be cautious not to damage brake lines while installing the anti-sway bar.

6. Using a 14mm socket, and 14mm closed end wrench tighten and torque the bracket hardware to 19 lb ft.

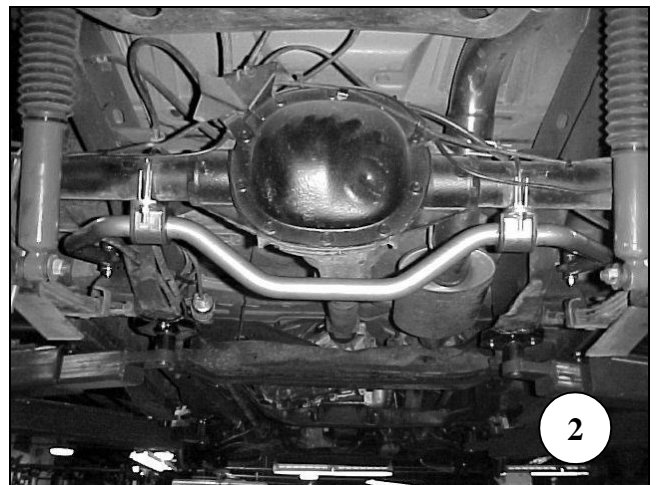
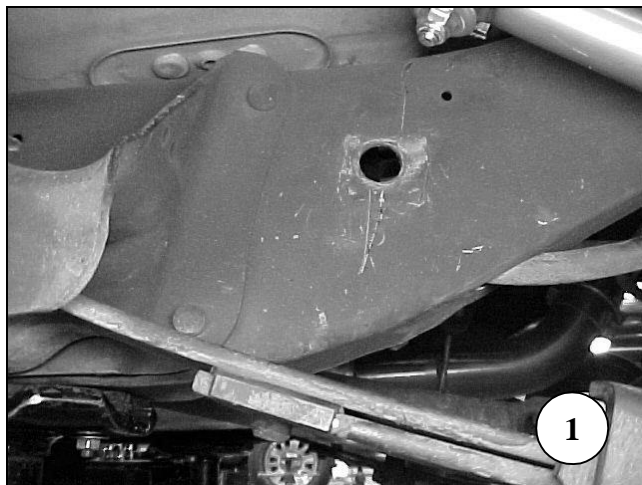
All hardware being fastened to the vehicle's original fastening points should be torqued to the proper specifications. To prevent chassis damage, never over-torque the hardware.

7. Check that all components and fasteners have been properly installed, tightened and torqued.
8. Check brake hoses, and other components for any possible interference.
9. Lift vehicle and remove support stands. Carefully lower vehicle to ground. With vehicle in loaded position tighten the bracket bolt to the frame, (you'll notice the bracket turned to level position).
10. Immediately test-drive the vehicle in a remote location so that you can become accustomed to the revised driving characteristics and handling. Be aware that the vehicle will handle substantially different now that it has been modified.
11. Installation is complete. Check all of the hardware and re-torque at intervals for the first 10, 100, 1000 miles.

We highly recommend installing the appropriate matching Belltech Front Anti-Sway Bar to maintain proper handling characteristics and performance. See the current **Belltech Application Guide** or contact you nearest **Belltech Dealer** for the appropriate part number for your application.

PARTS LIST FOR 5524 REAR SWAYBAR

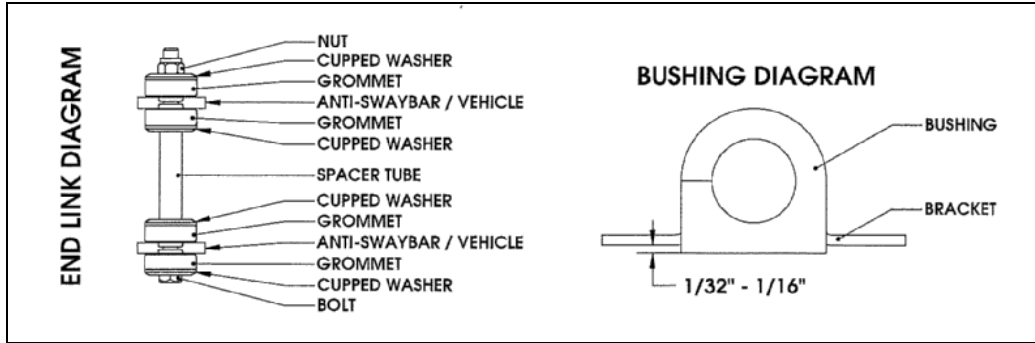
PART#	DESCRIPTION	QTY
5524-300	Rear Anti-Sway Bar	1
113165	Pivot Bushing 1"	2
113000	Grommets	8
112276	2-1/2" U clamp	2
114038	Under Support Plate	2
114032	Pivot Bushing Bracket	2
5524-003	End Link Bracket	2
112502	Cupped Washer Large	8
110255	3/8-16 Nylock Nut	6
112118	3/8-16 X 4 HHCS	2
110625	3/8 SAE Washer	4
112518	3/8 USS Flat Washer	2
112202	1/2-13 x 1-1/4 HHCS	2
112322	1/2-13 Nylock Nut	2
110660	1/2 SAE Washer	4
55000-10	Grease Pack	1



! BELLTECH INSTALLATION TIPS

LUBRICATION

Pre-lubricating the inside of the bushing before it's installed is important because the lubrication will greatly reduce noise and it will increase bushing life. Belltech recommends you use Molybdenum disulfide. This will help protect the inside surface of the bushing and will last longer than most types of grease. Thoroughly lubricate the inside of the bushing with this grease.



BUSHING INSTALLATION

Make sure an amount of 1/32" to 1/16" of the bushing is showing when you install it onto the bracket. See the diagram above. If the bushing is showing more than 1/16" than use a sander or a sheet of coarse grit sand paper to shave it down to the proper height. In most applications when installing the new bushings on your Belltech Anti-Sway Bar you may refer to your original equipment Anti-Sway Bar to locate the proper location.

END LINK INSTALLATION

It is not required that you use lubricant on the end links since there is not any rotational movement. The Belltech end links are comprise of grommets, cupped washers, a spacer tube, bolt, and lock nut, these assembled components create the end link. See END LINK DIAGRAM above.

AXLE CLAMP DIAGRAM

