



## INSTALLATION INSTRUCTIONS

1075 North Ave. Sanger, CA 93657-3539 local: 559-875-0222 fax: 559-876-2259 toll free: 800-445-3767

### 5562 REAR ANTI-SWAY BAR 06-UP FORD MUSTANG



#### CONGRATULATIONS!

You were selective enough to choose a BELLTECH PRODUCT. We have spent many hours developing our line of products so that you will receive maximum performance with minimum difficulty during

**Note:** Confirm that all of the hardware listed in the parts list is in the kit. **DO NOT** begin this installation if any part is missing. Read the instructions thoroughly before beginning this installation.

**Warning:** **DO NOT** work under a vehicle supported by only a jack. Place support stands securely under the vehicle in the manufacturer's specified locations unless otherwise instructed.

**Warning:** **DO NOT** drive the vehicle until all work has been completed and checked. Torque all hardware to values specified.

**Reminder:** Proper use of safety equipment and eye/face/hand protection is absolutely necessary when using these tools to perform procedures!

**Note:** It is very helpful to have an assistant available during the installation process.

**Note:** We **DO NOT RECOMMEND** using wheel ramps while performing this installation.

#### RECOMMENDED TOOLS:

- Blocks and Wheel chocks
- Ratcheting Socket Wrench (14,15, 18 and 19mm)
- Safety Glasses
- Floor jack and Jack Stands
- Properly rated floor jacks and support stands
- Combination Wrench (14,15, 18 and 19mm)
- Torque wrench: 0-100 lb ft. range

## Kit Contents

PART NO.	DESCRIPTION	QTY
51027-300	BT REAR ANTI-SWAY BAR	1
113075	PIVOT BUSHING (OUTSIDE)	2
114026	LARGE BUSHING BRACKET	2
55000-110	GREASE PACK	1
51027-050	END-LINK BRACKET	2
110625	FLAT WASHER	8
110255	NYLOC NUT	4
112094	HEX HEAD BOLT	4
113165	PIVOT BUSHING (INSIDE)	2
114020	SMALL BUSHING BRACKET	2
51027V6-777	V6 HARDWARE PACK	1



Belltech  
Rear ASB



End-link bracket



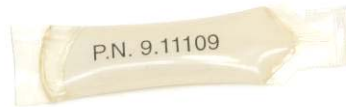
Small and large  
bushing brackets



Inside and outside  
pivot bushings



End-link bracket hardware including  
flat washer, Nyloc nuts and bolts



Pivot bushing  
grease pack



V6 hardware pack for non-  
rear-bar equipped cars

## KIT INSTALLATION

### 1 VEHICLE PREPERATION

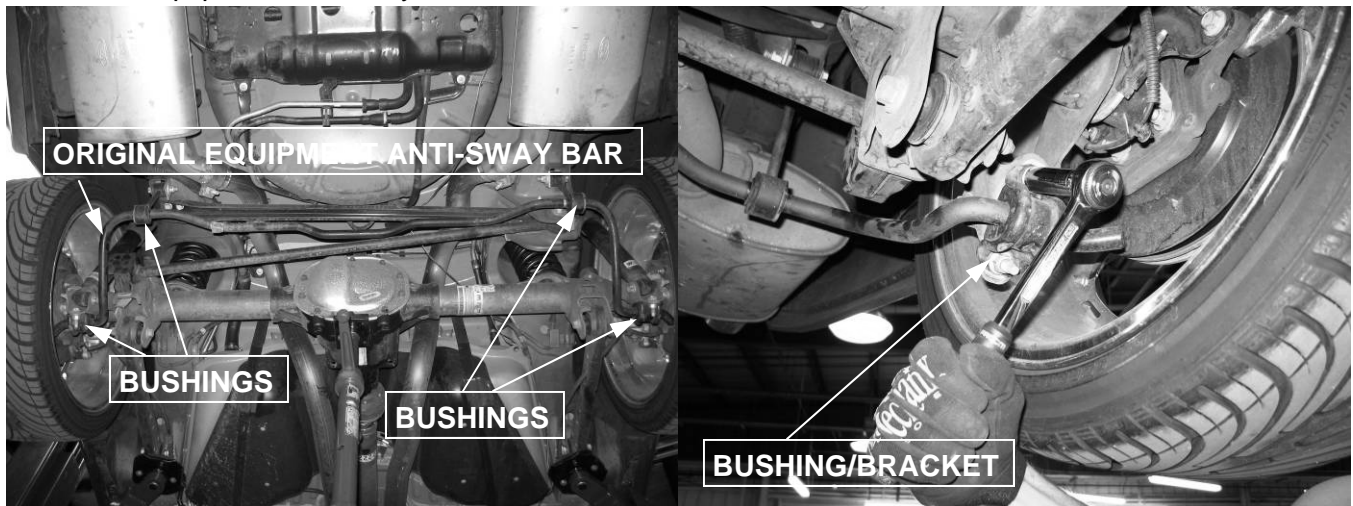
- 1a. Open the hardware kit and remove all of the contents. Refer to the parts list to verify that all parts are present.
- 1b. Park the vehicle on a smooth, level concrete or seasoned asphalt surface and activate the parking brake. Block the **FRONT** wheels of the vehicle with appropriate wheel chocks; making sure the vehicle's transmission is in 1st gear (manual) or "Park" (automatic).
- 1c. Using a properly rated floor jack, lift the **REAR** wheels of the vehicle off the ground. Place support stands, rated for the vehicle's weight and in the factory specified locations. Refer to the vehicle Owner's Manual. Prior to lowering the vehicle onto the stands, make sure the supports will securely contact the chassis.

- 1d. It is very important that the vehicle is properly supported during this installation to prevent personal injury and chassis damage. Make sure that the support stands are properly placed prior to performing the following procedures. We **DO NOT RECOMMEND** using wheel ramps while performing this installation.
- 1e. Slowly lower the vehicle onto the stands and, before placing the vehicle's entire weight on them, again check that they properly and securely contact the chassis as described above. Check for possible interference with any lines, wires, cables, or other easily damaged components.

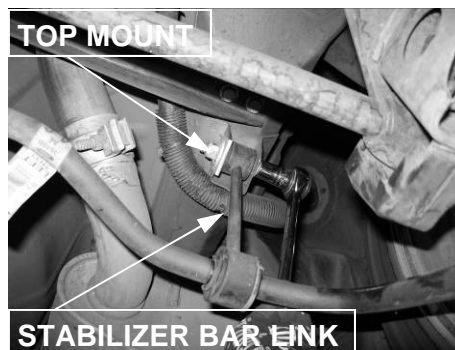
## 2. ORIGINAL EQUIPMENT ANTI-SWAY BAR REMOVAL

**NOTE:** Some vehicle models are not equipped with a stock rear anti-sway bar. If this is the case for your vehicle, move onto the installation portion of these instructions (Part 4)

- 2a. Locate the rear original equipment anti-sway bar. There are actually four mounting points that attach the anti-sway bar to the chassis frame
- 2b. Using a **15mm** wrench, un-bolt the four mounting nuts that mount the ends of the original equipment anti-sway bar.



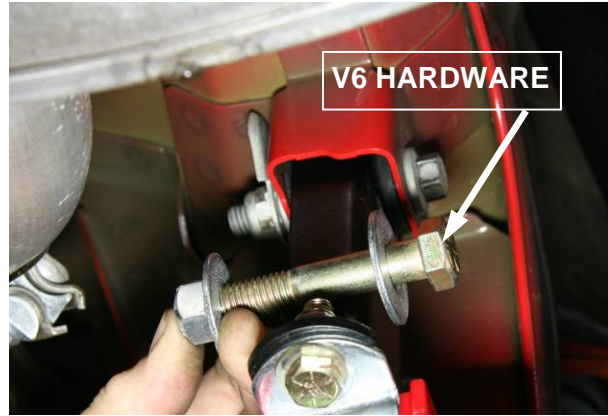
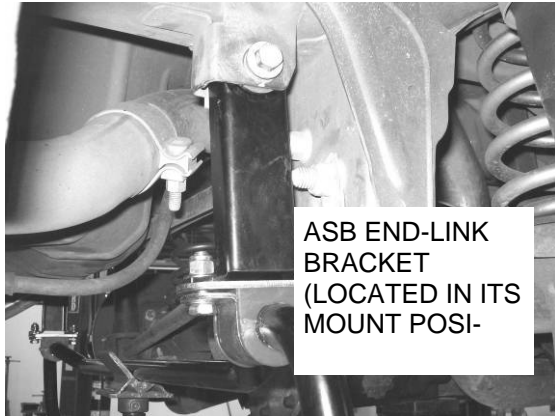
- 2c. Locate the top mount of the Stabilizer bar Link. Use **18mm** tools, un-bolt the mounting bolt, removing the bolt completely. Leave the mounting nut, which is secured with a clip, attached to the frame .



- 2d. Lower the original equipment anti-sway bar from the vehicle chassis.

### 3. INSTALLING THE NEW ANTI-SWAY BAR

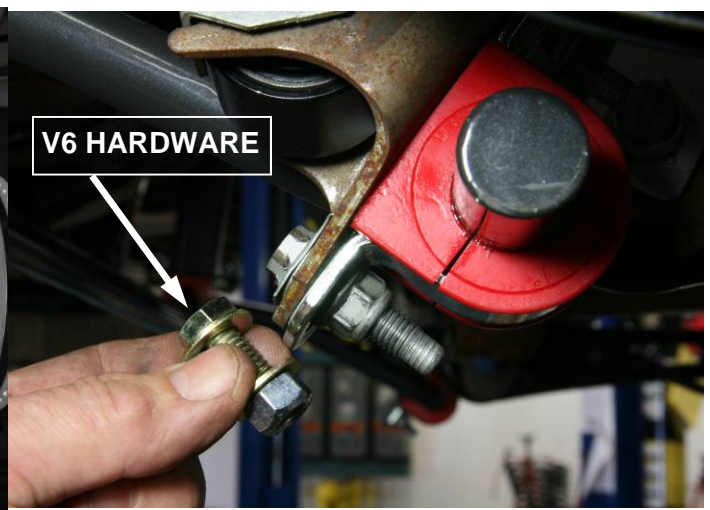
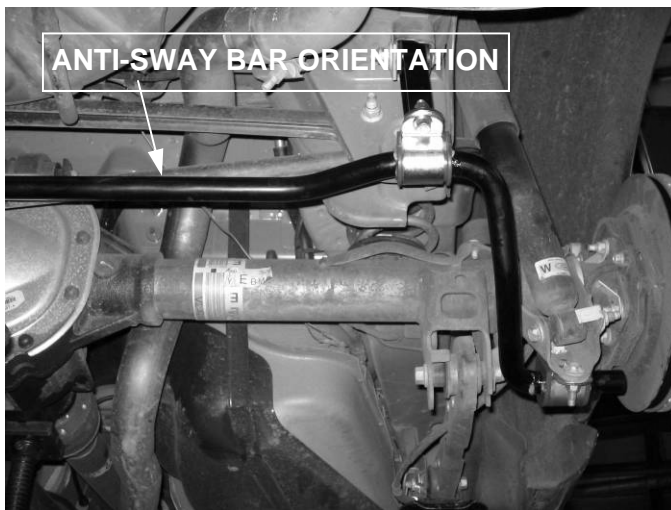
- 3a. Mount the new Belltech Rear Anti-Sway Bar End Link Bracket from the existing chassis bracket. Use the factory nuts and bolts if your car came with a factory rear ASB. If not use the supplied large bolts and washers in the **V6 Hardware Pack**. Finger-tighten the mounting hardware for now.



- 3b. Insert the kit supplied grease into the new large bushings. Spread and clip the new large bushings onto each end of the Belltech Anti-sway Bar in the same locations as they were located on the stock original equipment anti-sway bar.
- 3c. **NOTE:** This install is made easy with the help of an assistant. If one is not available, the use of a small adjustable jack stand can be substituted.

Holding the new anti-sway bar up, secure each bushing by hand tightening both new larger (outer) bushing brackets and bushings onto the lower shock mount. **The Suspension Techniques ASB is designed to be installed with the center bent section facing down.**

**NOTE:** If your vehicle did not come with a rear ASB, use the nuts and bolts provided in the **V6 Hardware Pack**. Use one washer on each side of brackets as shown below.

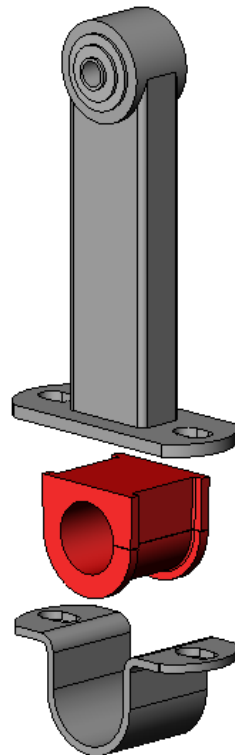


- 3d. Now grease into the new smaller end-link bushings. Spread and clip the new small bushings onto the Belltech Anti-sway Bar on each side of the center bend where they were located on the stock original equipment anti-sway bar.



- 3e. Sandwich the bar and bushing between the Belltech End-Link Brackets and the bushing brackets using the supplied nuts, bolts, and washers.

MOUNTS TO CHASSIS



END-LINK BRACKET ASSEMBLY

BUSHING

BUSHING BRACKET

- 3f. Slide the ASB left or right to center the bar between all four bushings. Using a **14mm** socket, tighten all four bushing bracket bolts to **52 lb•ft (70 Nm)**. Tighten the upper end-link bracket bolts to **85 lb•ft (115 Nm)** with a **19mm** socket.

## **5. FINALIZING THE INSTALLATION**

- 5a.** All hardware being fastened to the vehicle's original fastening points should be torqued to the proper specifications. To prevent chassis damage, never over-torque the hardware.
- 5b.** Check that all components and fasteners have been properly installed, tightened and torqued.
- 5c.** Check brake hoses and other components for any possible interference.
- 5d.** Lift the vehicle and remove the support stands. Carefully lower the vehicle to the ground.
- 5e.** Immediately test-drive the vehicle in a remote location so that you can become accustomed to the revised driving characteristics and handling. Be aware that the vehicle will handle substantially different now that it has been modified.
- 5f.** Installation is complete. Check all of the hardware and re-torque at intervals for the first 10, 100, 1000 miles.