

INSTALLATION GUIDE

PART NUMBER: 5559
REAR ANTI-SWAY BAR
FORD F-150 2WD/4WD | 2015-2020

****FOR VEHICLES WITH A FLIPPED AXLE SUSPENSION ONLY****

300 W. PONTIAC WAY. CLOVIS, CA 93612
PHONE: 800-445-3767 | EMAIL: INFO@BELLTECH.COM

THANK YOU

Thank you for choosing our high quality Belltech product. We have spent a great deal of time developing our line of products so that you will receive maximum performance with minimal difficulty during installation. Soon your vehicle will be on the road looking and feeling much improved.

Please take a moment to read all instructions and warnings prior to installation of your new Belltech product and before operating your vehicle. If you have any questions or concerns regarding any step in the installation process, please do not hesitate to call or email our customer support specialists who are trained to help you through any portion of this process.

Before You Begin:

It is of the utmost importance that you confirm all of the components listed on the parts list is in the kit. You can find this list located on the last page(s) of your instructions. Do not begin installation if any part is missing. Instead, please call our Belltech customer service specialists.

Belltech Customer Support:

Phone: 1-800-445-3767

Email: info@belltech.com

Safety Information:

Warning: Do not work under a vehicle supported only by a jack. Place support stands securely under the vehicle in the manufacturer's specified locations unless otherwise instructed.

Proper use of safety equipment and eye/face/hand protection is absolutely necessary when performing any of the following instructions.

We strive for an exceptional experience for all our valued customers. If for any reason you need assistance with your Belltech products, please do not return the product to the store you purchased from, but rather call our dedicated customer service experts, from 7am to 5pm PST.

We recommend that a qualified mechanic, at a properly equipped facility, perform this installation.

It is very helpful to have an assistant available during installation.

Before Driving Your Vehicle:

It is important to double check all brake hoses, cables, and other components to be sure there is no interference. You must also check for wheel/tire to chassis/body interference. If any issues are found, review your installation instructions to be sure no steps were missed and any problems are corrected.

Make sure your vehicle is aligned immediately following installation.

Check all hardware and re-torque at intervals for the first 10, 100, and 1000 miles.

Some of Belltech's products are designed to improve your vehicle's off-road performance. Leveling/lifting your vehicle may result in an altered center of gravity. It is crucial to use extreme care when operating your vehicle to prevent rollover and/or loss of control.

Any changes in your vehicle's suspension may result in transformed handleability. Please test-drive your vehicle in a remote location so you can become accustomed to the revised driving characteristics.

Perform headlight check and adjustment.

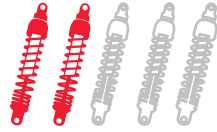
Failure to drive any modified vehicle in a safe manner may result in harm or death.

Never operate your modified vehicle under the influence of drugs, alcohol, or lack of adequate sleep.

Always wear your seatbelt.



DIFFICULTY:



INSTALLATION TIME: 1-2 Hours

RECOMMENDED TOOLS:

- Properly rated floor jack, support stands, and wheel chocks
- Ratcheting socket wrench and socket set
- Combination wrench set
- 17/32 drill bit and power drill
- Electric or pneumatic grinder
- Safety glasses

JACKING, SUPPORTING, AND PREPARING THE VEHICLE

1. Park your vehicle on a smooth, level, concrete or seasoned asphalt surface.
2. Block the front wheels of the vehicle using wheel chocks. Make sure the vehicle's transmission is in "PARK" (automatic) or 1st gear (manual).
3. Activate the parking brake.
4. Break loose, but do not spin the wheel lug nuts to ease in removal when the wheels are in the air.
5. Lift the rear of the vehicle off the ground using a properly rated floor jack. Lift the vehicle so the rear tires are approximately 6-8 inches off the ground.
6. Place support stands rated for the vehicles weight. The stands should be positioned in the factory specified locations. (Please refer to owners manual). Prior to lowering the vehicle onto stands, make sure the support stands will contact the chassis. It is very important that the vehicle is properly supported to prevent any harm to ones self or to the vehicle.
7. Lower the vehicle slowly onto the stands.
8. Remove the rear wheels.



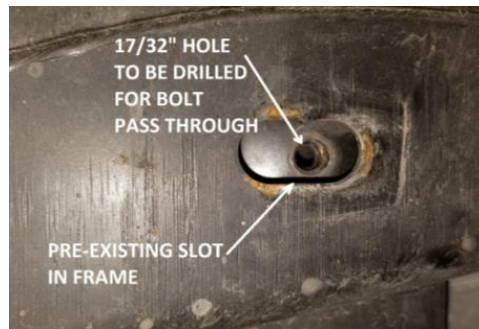
Technician reminder:

Never work under a vehicle supported only by a jack. It is necessary to place support stands securely under the vehicle in the manufacturer's specified locations unless otherwise instructed.

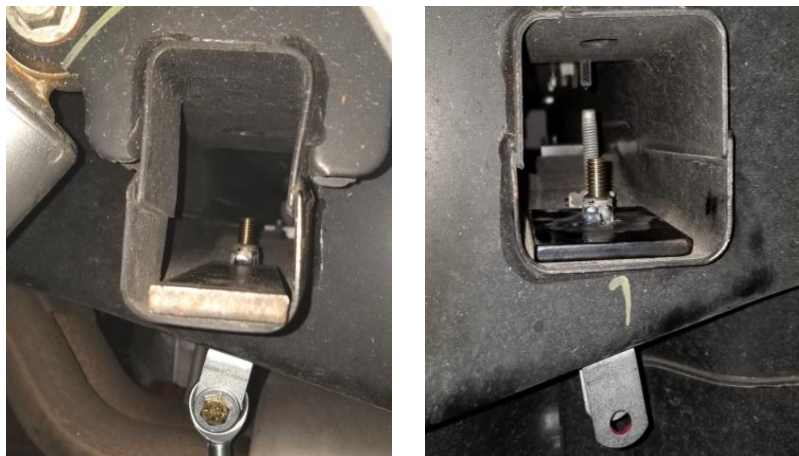
ANTI-SWAY BAR INSTALLATION

THE FOLLOWING INSTRUCTIONS ARE SAME FOR BOTH SIDES

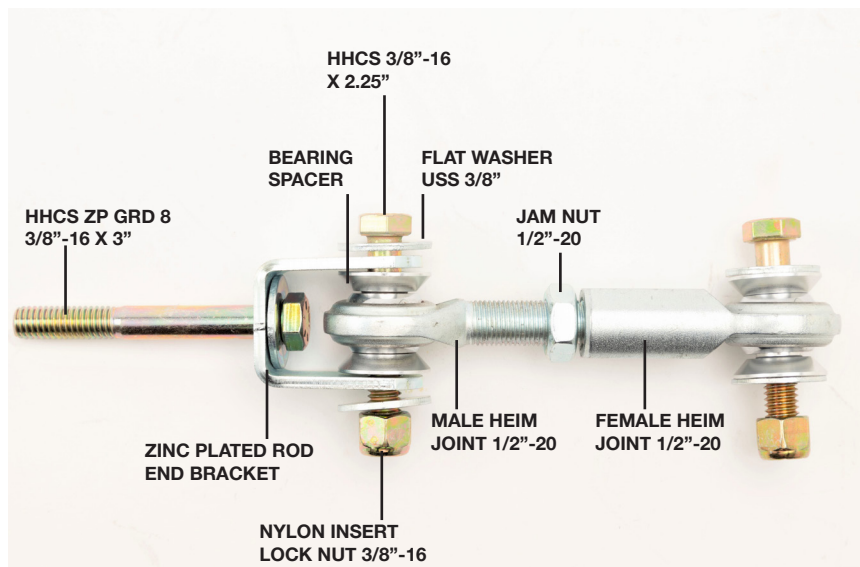
9. Locate the slot on either side of the vehicle on the underside of the frame, where the frame meets the rear cross beam.
10. Drill a 17/32" hole, directly above, into the cross beam. The hole should be located evenly between the front and backside of the beam and allow for the end link bracket bolt to pass through.



11. Slide the supplied end link mounting bracket plate into the cross beam far enough for the attached nut to align with the newly drilled hole. The plate number 6447-050 is used on the drivers side. Plate number 6447-051 is used on the passenger side. The mounting processes are the same on both sides.
12. Tighten the mounting bracket plate to the cross beam using the 3" long 3/8" hex head bolt along with the rod end bracket and washer between the head of the bolt and bracket to distribute the pressure. Be Careful not to overtighten and bend the bracket. Torque to 80 ft lbs.



13. Using the example below, please assemble the adjustable length end link.



ANTI-SWAY BAR INSTALLATION CONTINUED

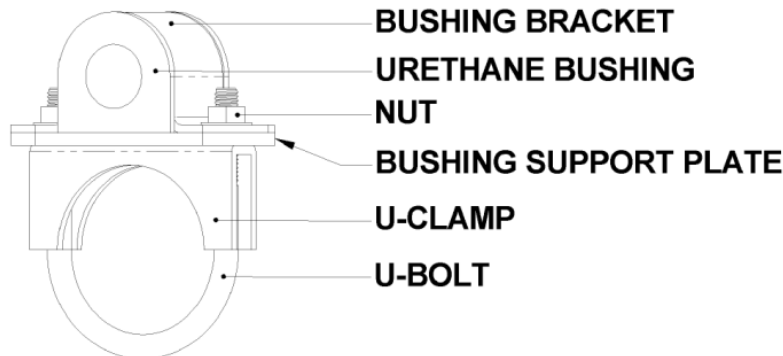
14. Attach the end link assembly to the mounting rod end bracket and secure it hand tight with the supplied 3/8"-16 X 2.25" HHCS bolt, the 3/8" - 16 Nyloc nut, and the 3/8" USS flat washer on each side of the bracket. Ensure the jam nut is tightened to prevent the end link from coming out of adjustment.
15. Using the supplied grease pack, thoroughly lubricate the inside of the new polyurethane bushings.
16. Attach the bushings on both sides of the Belltech sway bar, close to the bends. Once located, rotate the bushings slightly to evenly spread the lubricant.
17. Insert the bar from under the vehicle positioning it under the axle with the bar ends pointed forward and above the leaf springs.



Installation Note:

The U-bolt is to be placed under the existing brake line. Ensure the brake line and parking brake cable are not tangled or crushed by the sway bar or other mounting components.

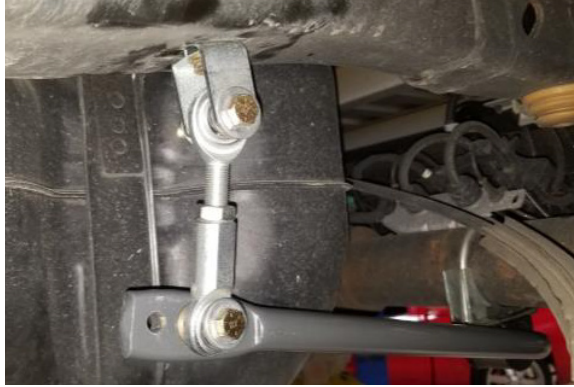
18. Once in position, start from one side and place one U-bolt, U-clamp, and bushing support plate around the axle.
19. While holding the U-bolt assembly with one hand, attach the sway bar with pivot bushings, the bushing bracket, then loosely thread the the supplied 3/8"-16 Nyloc Nut and 3/8" USS flat washer hardware into place.



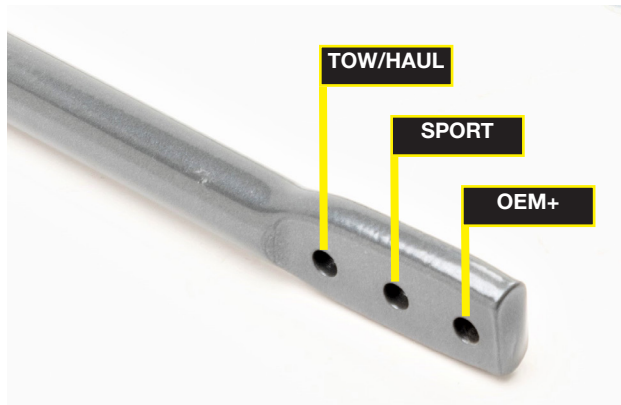
20. Repeat the steps for the other side. Do not tighten the U-bolts yet as they will be securely fastened after all the other components have been installed.

ANTI-SWAY BAR INSTALLATION CONTINUED

21. Attach the bottom of each end link assembly onto the Belltech sway bar using the HHCS 3/8"-16 x 2.25" bolts, the 3/8 USS flat washers, and 3/8"-16 Nyloc nuts. The end links should be outboard of the sway bar. Please make sure there is a washer between the sway bar and the fastening nut.



22. We recommend testing the sway bar in its softest setting, which is the setting furthest from the axle, each remaining setting will stiffen the roll resistance forces by 10%.



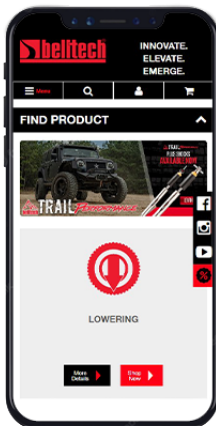
23. Adjust the length of the end links to set the swaybar as parallel with the ground as possible, while still having at least 7-8 turns of thread on the heim joint remaining. Torque the end links to 45 ft lbs.
24. Once the end link hardware is tightened, center the sway bar bushings. Both sway bar bushings and bracket assemblies should now be pushed as far outboard as possible so that the bushing is next to the bend in the bar. The sway bar bushing clamp and hardware should be rotated onto the bottom side of the axle so that the end links are in a vertical position when looking from the side of the vehicle.
25. Tighten and torque the U-bolt bracket hardware to 19 ft lbs.
26. Check that all components and fasteners have been properly installed, tightened, and torqued.
27. Check the brake hoses, parking brake cable, and other components for any possible interference.

FINALIZING THE INSTALLATION

28. Re-install the wheels and tighten the lug nuts.
29. Lift the vehicle and remove the support stands.
30. Carefully lower the vehicle onto the flat ground.
31. Torque the lug nuts to manufacturer's specifications.
32. Check that all components and fasteners have been properly installed and torqued.
33. Re-read and perform all tasks in the "Before Driving Your Vehicle" section of page 1 of your instructions.

THANK YOU FOR CHOOSING BELLTECH.

You are now a part of the Belltech family and we are eager to catch a glimpse of your newly modified vehicle. Give us a shout out and let us know how much you love our product. Don't forget, we offer other Belltech related merchandise for you and your vehicle on our website, www.belltech.com



[belltechsuspension](https://www.facebook.com/belltechsuspension)



[Belltech Suspension](https://www.youtube.com/BelltechSuspension)



[@belltechsuspension](https://www.instagram.com/belltechsuspension)

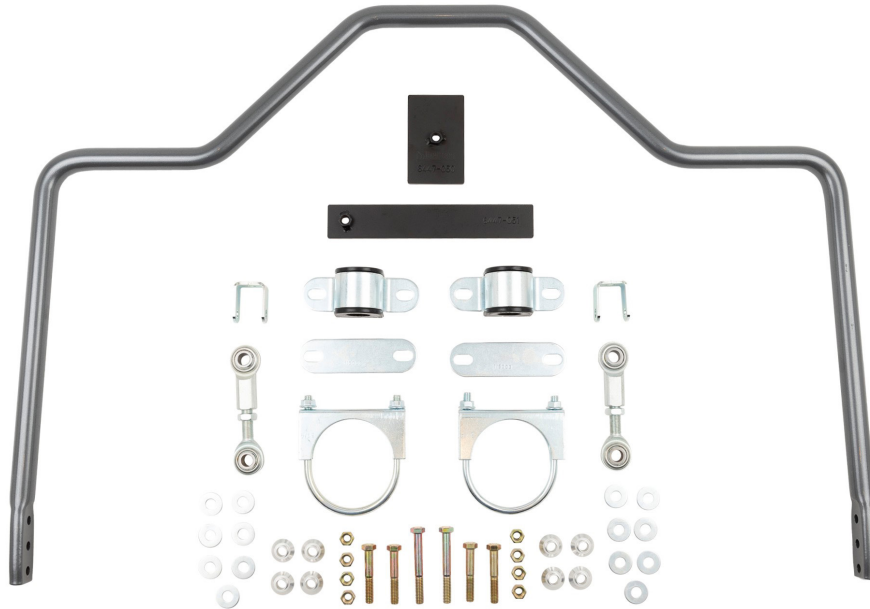
If you have any questions, concerns, or warranty related issues regarding your Belltech product, please call or email our experienced customer service specialists.

Belltech Customer Support:

Phone: 1-800-445-3767

Email: info@belltech.com

KIT CONTENTS



Anti-Sway Bar Kit		
Part number	Description	Qty
5559-300	REAR ANTI-SWAY BAR	1
5559-777	HARDWARE KIT	1

Hardware Kit (5559-777)		
Part number	Description	Qty
55000-10	GREASE PACK	1
6447-050-99	DRIVER SIDE MOUNT PLATE	1
6447-051-991	PASS. SIDE MOUNT PLATE	1
112112	HHCS BOLT 3/8-16 X 3"	2
112248	MALE HEIM JOINT 1/2"-20	2
112249	FEMALE HEIM JOINT 1/2"-20	2
112260	U-CLAMP 3-1/4"	2
112326	JAM NUT 1/2"-20	2
113075	PIVOT BUSHING 1.0"	2
115002-95	PIVOT BUSHING BRACKET	2
115003-95	BUSHING SUPPORT PLATE	2
71001-007-95	ROD END BRACKET	2
112106	HHCS 3/8"-16 X 2-1/4"	4
110255	NYLON LOCK NUT 3/8"-16	8
57400-045	BEARING SPACER	8
112518	FLAT WASHER USS 3/8"	14