



INSTALLATION INSTRUCTIONS

300 W. Pontiac Way Clovis, CA 93612 toll free: 1-800-445-3767 web: www.belltech.com

5552 REAR ANTI SWAY BAR KIT 86-93 MAZDA PICKUP

Thank you for being selective enough to choose our high quality BELLTECH PRODUCT. We have spent many hours developing our line of products so that you will receive maximum performance with minimum difficulty during installation.

- Note: Confirm that all of the hardware listed in the parts list is in the kit. **Do not** begin installation if any part is missing. Read the instructions thoroughly before beginning this installation.
- Warning:** **DO NOT** work under a vehicle supported by only a jack. Place support stands securely under the vehicle in the manufacturer's specified locations unless otherwise instructed.
- Warning:** **DO NOT** drive vehicle until all work has been completed and checked. Torque all hardware to values specified.
- Reminder: Proper use of safety equipment and eye/face/hand protection is absolutely necessary when using these tools to perform procedures!
- Note: It is very helpful to have an assistant available during installation.

RECOMMENDED TOOLS:

- Properly rated floor jack, support stands, and wheel chocks
- Combination wrench set
- Torque wrench: *0-75 lb ft. range*
- Ratcheting socket wrench and socket sets
- Air Chisel / Die grinder W/ cut off wheel
- Safety Glasses

KIT INSTALLATION

1. Open the hardware kit and remove all of the contents. Refer to the part list (Page 2) to verify that all parts are present.
2. Park the vehicle on a smooth level asphalt or concrete surface. Place a block in front of and behind the FRONT wheels. Jack up the REAR of the vehicle and place jack stands securely under the frame in the manufacturer's specified locations. Remove the rear wheels.
3. To determine the proper mounting position of the Anti-Sway Bar, lay Anti-Sway Bar on a flat surface, moment arms parallel with the surface and pointing toward the front of the vehicle.
4. Thoroughly lubricate the **inside** of your new hyperthane bushings using the grease packet included with the kit.
5. Carefully bend hydraulic brake lines away from the rear end and loosely fasten center portion of Anti-Sway Bar to top of rear end using U-clamp assemblies (refer to diagram).
6. **CAUTION: Do not** crush brake lines.

7. Position your new Belltech Anti-Sway Bar on the vehicle, center left to right, directly above the axle and secure it with the new bushing bracket and U clamps. Tighten the clamps to 24 ft/lbs of torque.
8. Loosely assemble end link and end link hangers onto the ends of the Anti-Sway Bar (refer to diagram).
9. Swing end link hangers up to frame rails and scribe marks on the frame rails for drilling. Make sure chassis is at ride height prior to marking holes in the frame. NOTE: Holes should be approximately 3/4" from the bottom of the frame rails.
10. Center-punch at the scribe marks and drill a 3/8" hole through both sides of both frame rails.
11. Fasten end link hangers to the frame rail using the 3/8" by 4" bolts, 3/8" flat washers and nylock nuts (see diagram) supplied in the kit. Torque the nuts to 28-32 ft/lbs.
12. **CAUTION: Do not** crush the frame rails.
13. Install the kit supplied end links as shown on the attached sheet. Tighten the nut on the end link so that only the center spacer washer can be rotated firmly by hand.
14. Go over the entire installation procedure and make sure all the bolts and nuts are properly torqued. Install wheels.

PART LIST FOR MAZDA PICKUP REAR ANTI SWAY BAR KIT

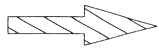
PART No.	DESCRIPTION	QTY.
5552-200	Rear Anti Sway Bar	1
113195	Pivot Bushing 3/4"	2
113000	Grommet	8
112258	3" U-Clamp	2
114038	Under Support Plate	2
114032	Bushing Bracket	2
112502	Cupped Washer Large	4
110255	3/8"-16 Ny Lock Nut	8
112118	3/8"-16 x 4" HHCS	4
110625	Flat Washer	8
112518	Flat Washer	2
55000-10	Grease Pack	1

Immediately test-drive the vehicle in a remote location so that you can become accustomed to the revised driving characteristics and handling. Be aware that the vehicle will handle substantially different now that it has been modified.

The following instructions are essential to ensure your new bushing will have a long and trouble-free life.

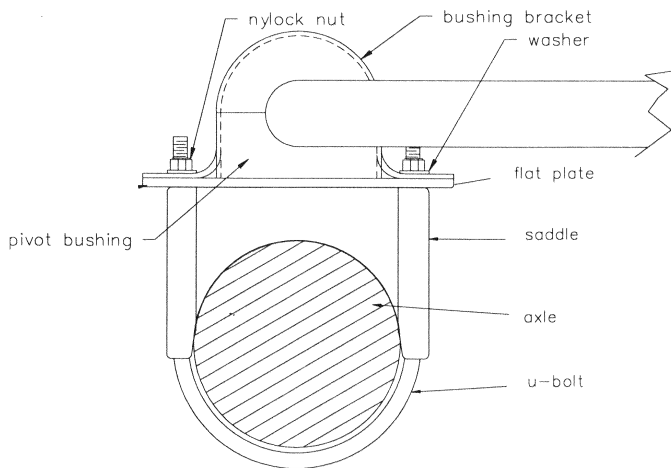
Pre-lubricating a bushing before its installation is important because the lubrication will greatly reduce bushing noise and it will increase bushing life. Belltech recommends using the grease packet included in the kit. This will help protect the inside surface of the bushing and will last longer than most other types of grease. Thoroughly lubricate the inside of the bushing with this grease.

Make sure a maximum of 1/32" to 1/16" of the bushing is showing when you install it into the bracket. See the diagram below. If the bushing is showing more than 1/16" use a belt sander or a sheet of coarse grit sand paper to shave it down to the proper height. In most applications you may refer to your original equipment Anti-Sway bar to locate the proper place the new Bushing belongs on your new Belltech Anti-Sway Bar.



FRONT OF
VEHICLE

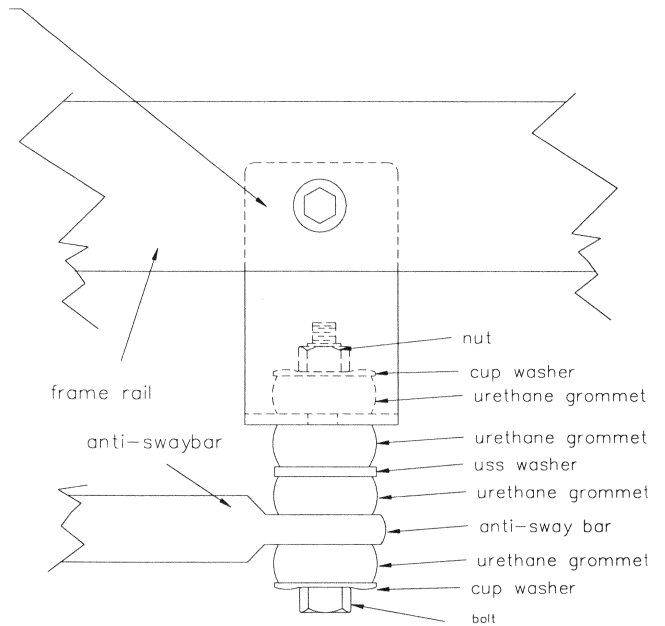
endlink should be close to 90 deg to frame and anti-swaybar.
if not possible, get the angle as close as possible to 90 deg.
the vehicle must be at ride height when the endlink holes are marked for drilling
drill holes to 3/8" in dia.



U-CLAMP AND PIVOT BUSHING ASSEMBLY

5552DWG 3/96

VIEW NOT TO SCALE



ENDLINK ASSEMBLY

VIEW NOT TO SCALE