



# SETUP GUIDE

**PART NUMBER: 17011 / 17013**  
**DAMPING ADJUSTABLE SHOCKS**  
**JEEP WRANGLER JK | 2007-2017**

**300 W. PONTIAC WAY. CLOVIS, CA 93612**  
**PHONE: 800-445-3767 | EMAIL: INFO@BELLTECH.COM**

# THANK YOU

Thank you for choosing our high quality Belltech product. We have spent a great deal of time developing our line of products so that you will receive maximum performance with minimal difficulty during installation. Soon your vehicle will be on the road looking and feeling much improved.

**Please take a moment to read all instructions and warnings prior to installation of your new Belltech product and before operating your vehicle. If you have any questions or concerns regarding any step in the installation process, please do not hesitate to call or email our customer support specialists who are trained to help you through any portion of this process.**

## Before You Begin:

**It is of the utmost importance that you confirm all of the components listed on the parts list is in the kit. You can find this list located on the last page(s) of your instructions. Do not begin installation if any part is missing. Instead, please call our Belltech customer service specialists.**

### Belltech Customer Support:

Phone: 1-800-445-3767

Email: [info@belltech.com](mailto:info@belltech.com)

## Safety Information:

**Warning:** Do not work under a vehicle supported only by a jack. Place support stands securely under the vehicle in the manufacturer's specified locations unless otherwise instructed.

Proper use of safety equipment and eye/face/hand protection is absolutely necessary when performing any of the following instructions.

We strive for an exceptional experience for all our valued customers. If for any reason you need assistance with your Belltech products, please do not return the product to the store you purchased from, but rather call our dedicated customer service experts, from 7am to 5pm PST.

We recommend that a qualified mechanic, at a properly equipped facility, perform this installation.

It is very helpful to have an assistant available during installation.

## Before Driving Your Vehicle:

It is important to double check all brake hoses, cables, and other components to be sure there is no interference. You must also check for wheel/tire to chassis/body interference. If any issues are found, review your installation instructions to be sure no steps were missed and any problems are corrected.

Make sure your vehicle is aligned immediately following installation.

Check all hardware and re-torque at intervals for the first 10, 100, and 1000 miles.

Some of Belltech's products are designed to improve your vehicle's off-road performance. Leveling/lifting your vehicle may result in an altered center of gravity. It is crucial to use extreme care when operating your vehicle to prevent rollover and/or loss of control.

Any changes in your vehicle's suspension may result in transformed handleability. Please test-drive your vehicle in a remote location so you can become accustomed to the revised driving characteristics.

Perform headlight check and adjustment.

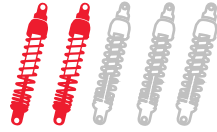
Failure to drive any modified vehicle in a safe manner may result in harm or death.

Never operate your modified vehicle under the influence of drugs, alcohol, or lack of adequate sleep.

Always wear your seatbelt.



**DIFFICULTY:**



**INSTALLATION TIME:** 1-2 Hours

## RECOMMENDED TOOLS:

- Properly rated floor jack
- Support stands
- Wheel chocks
- Metric socket wrench set
- Metric wrench set

## SPECIALTY TOOLS:

- Torque wrench up to 100 ft lbs.

# JACKING, SUPPORTING, AND PREPARING THE VEHICLE

1. Park your vehicle on a smooth, level, concrete or seasoned asphalt surface.
2. Block the rear wheels of the vehicle using wheel chocks. Make sure the vehicle's transmission is in "PARK" (automatic) or 1st gear (manual).
3. Activate the parking brake.
4. Lift the front of the vehicle off the ground using a properly rated floor jack. Lift the vehicle so the front tires are approximately 6-8 inches off the ground.
5. Place support stands rated for the vehicles weight. The stands should be positioned in the factory specified locations (Refer to the owners manual). Prior to lowering the vehicle onto stands, make sure the support stands will contact the chassis. It is very important that the vehicle is properly supported to prevent any harm to ones self or to the vehicle.
6. Lower the vehicle slowly onto the stands.



## Technician reminder:

Never work under a vehicle supported only by a jack. It is necessary to place support stands securely under the vehicle in the manufacturer's specified locations unless otherwise instructed.

## FRONT SHOCK REMOVAL

7. Place a jack under the front axle and lift it up to relief some of the pressure off the shock.
8. Remove the upper 16mm nut and the lower 18mm bolt from the front shock absorber to detach it from the vehicle. The lower bolt and nut will be reused.



## REAR SHOCK REMOVAL

9. Lift the rear of the vehicle off the ground using a properly rated floor jack. Lift the vehicle so the front tires are approximately 6-8 inches off the ground. Place support stands rated for the vehicles weight. Lower the vehicle slowly onto the stands.
9. Place a jack under the rear axle and lift it up to relief some of the pressure off the shock.
10. Detach the rear shocks using an 18mm wrench and socket on the lower bolt and a 16mm socket for the two upper bolts.



# BELLTECH SHOCK REBOUND AND COMPRESSION ADJUSTMENT

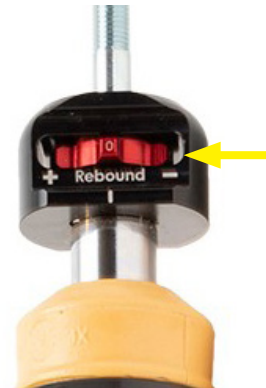
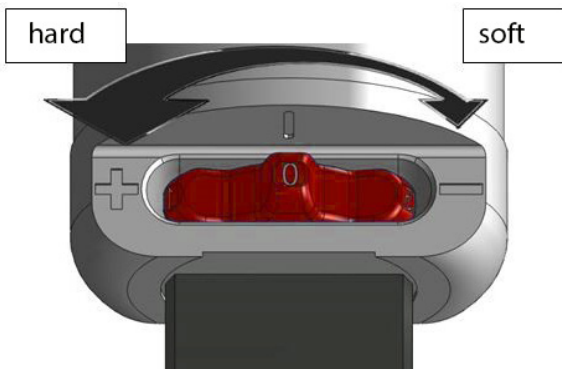


## Technician note:

Tuning the rebound and compression valves will alter the vehicles' driving characteristics. Please adjust all settings safely and in small increments to get familiar with the new handling and performance of the vehicle. The shock is delivered preset with the base settings in the table below.

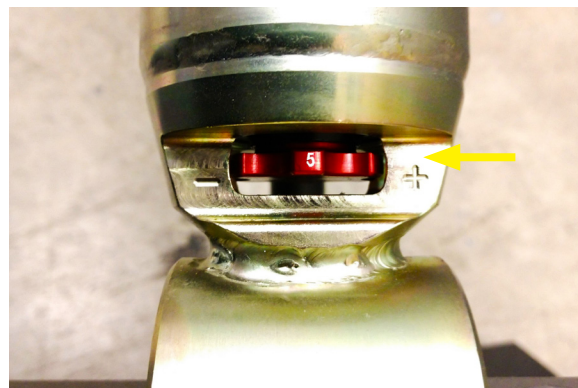
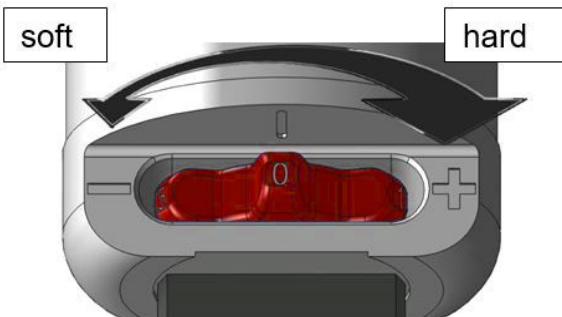
- The adjustment setting marked with the "+" symbol will make the damper harder. The adjustment setting marked with the "-" symbol will make the damper softer. All adjustments must be done based on a closed valve (max. hard). The closed valve can be reached by turning the adjustment wheel completely to hard (+) then open (-) to the desired setting.
- Turn the upper, built in, knob to adjust the rebound. Turn to hard (+) to close or turn to soft (-) to open.

2007-2017 Jeep Wrangler Front Shock		
Stroke	Setting	Adjustment
Rebound	9 Clicks	Open
Compression	6 Clicks	Open



- Turn the bottom, built in, knob to adjust the compression. Turn to hard (+) to close or turn to soft (-) to open.

2007-2017 Jeep Wrangler Rear Shock		
Stroke	Setting	Adjustment
Rebound	9 Clicks	Open
Compression	4 Clicks	Open

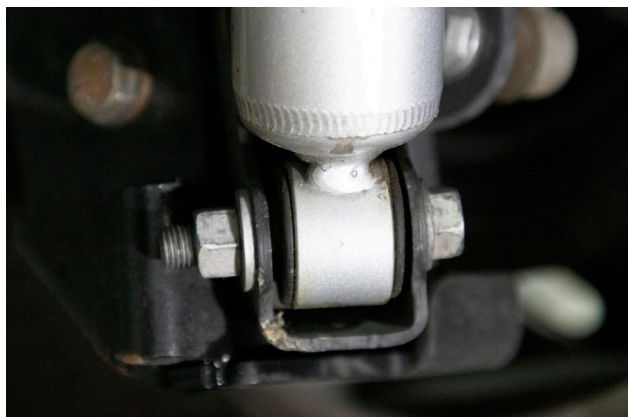


## FRONT SHOCK INSTALLATION

14. Install the front Belltech shock by guiding the upper shock pin through the shock mount. The rubber bushings will sit above and below the shock mount. Torque the upper nut to 20 ft lbs. Attach the lower shock eyelets to the axle using the original nut and bolt. Torque to 72 ft lbs.



15. Install the rear Belltech shocks with the original upper bolts, torque to 37 ft lbs. Attach the lower shock eyelets to the axle using the original nut and bolt. Torque to 65 ft lbs.

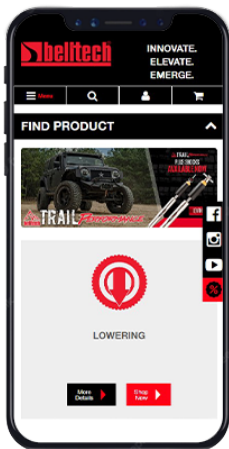


# FINALIZING THE INSTALLATION

16. Mount the wheels and tighten the lug nuts.
17. Lift the vehicle and remove the support stands.
18. Carefully lower the vehicle onto the flat ground.
19. Torque the lug nuts to 95 ft lbs.
20. Check that all components and fasteners have been properly installed and torqued.
21. Read and perform all tasks in the “Before Driving Your Vehicle” section of page 1 of your instructions.

## THANK YOU FOR CHOOSING BELLTECH.

You are now a part of the Belltech family and we are eager to catch a glimpse of your newly modified vehicle. Give us a shout out and let us know how much you love our product. Don't forget, we offer other Belltech related merchandise for you and your vehicle on our website [www.belltech.com](http://www.belltech.com)



[belltechsuspension](https://www.facebook.com/belltechsuspension)



[Belltech Suspension](https://www.youtube.com/BelltechSuspension)



[@belltechsuspension](https://www.instagram.com/belltechsuspension)

If you have any questions, concerns, or warranty related issues regarding your Belltech product, please call or email our experienced customer service specialists.

### Belltech Customer Support:

Phone: 1-800-445-3767

Email: [info@belltech.com](mailto:info@belltech.com)



# KIT CONTENTS (17011)



17011		
Part number	Description	Qty
35Z29101	BELLTECH DAMPER	1
110250	HEX NUT M10 X 1.25	1
110260	HALF NUT M10 X 1.25	1
7000-893	SHOCK STEM BUSHING	1
7000-898	SHOCK STEM CUP WASHER	1

# KIT CONTENTS (17013)



17013		
Part number	Description	Qty
17013	BELLTECH DAMPER	1