



# INSTALLATION GUIDE

**PART NUMBER: 15207**  
**FRONT COILOVER KIT**  
**FORD F-150 4WD | 2021+**

3" to 4" HEIGHT ADJUSTABLE

This coilover kit was designed to be used with Belltech lift kit number 152511HK. It cannot be used alone to achieve a 3" to 4" lift. It may be used on a vehicle that has been lifted 3" to 4" using another brand. Belltech has not tested cross-compatibility with any other brands and cannot guarantee results when used with another brands products.

300 W. PONTIAC WAY. CLOVIS, CA 93612  
PHONE: 800-445-3767 | EMAIL: [INFO@BELLTECH.COM](mailto:INFO@BELLTECH.COM)

# THANK YOU

Thank you for choosing our high quality Belltech product. We have spent a great deal of time developing our line of products so that you will receive maximum performance with minimal difficulty during installation. Soon your vehicle will be on the road looking and feeling much improved.

**Please take a moment to read all instructions and warnings prior to installation of your new Belltech product and before operating your vehicle. If you have any questions or concerns regarding any step in the installation process, please do not hesitate to call or email our customer support specialists who are trained to help you through any portion of this process.**

## Before You Begin:

**It is of the utmost importance that you confirm all of the components listed on the parts list is in the kit. You can find this list located on the last page(s) of your instructions. Do not begin installation if any part is missing. Instead, please call our Belltech customer service specialists.**

### Belltech Customer Support:

Phone: 1-800-445-3767

Email: [info@belltech.com](mailto:info@belltech.com)

## Safety Information:

**Warning:** Do not work under a vehicle supported only by a jack. Place support stands securely under the vehicle in the manufacturer's specified locations unless otherwise instructed.

Proper use of safety equipment and eye/face/hand protection is absolutely necessary when performing any of the following instructions.

We strive for an exceptional experience for all our valued customers. If for any reason you need assistance with your Belltech products, please do not return the product to the store you purchased from, but rather call our dedicated customer service experts, from 7am to 5pm PST.

We recommend that a qualified mechanic, at a properly equipped facility, perform this installation.

It is very helpful to have an assistant available during installation.

## Before Driving Your Vehicle:

It is important to double check all brake hoses, cables, and other components to be sure there is no interference. You must also check for wheel/tire to chassis/body interference. If any issues are found, review your installation instructions to be sure no steps were missed and any problems are corrected.

Make sure your vehicle is aligned immediately following installation.

Check all hardware and re-torque at intervals for the first 10, 100, and 1000 miles.

Some of Belltech's products are designed to improve your vehicle's off-road performance. Leveling/lifting your vehicle may result in an altered center of gravity. It is crucial to use extreme care when operating your vehicle to prevent rollover and/or loss of control.

Any changes in your vehicle's suspension may result in transformed handleability. Please test-drive your vehicle in a remote location so you can become accustomed to the revised driving characteristics.

Perform headlight check and adjustment.

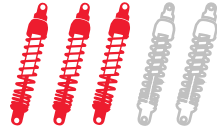
Failure to drive any modified vehicle in a safe manner may result in harm or death.

Never operate your modified vehicle under the influence of drugs, alcohol, or lack of adequate sleep.

Always wear your seatbelt.



**DIFFICULTY:**



**INSTALLATION TIME:**

2-4 Hours + Alignment

### RECOMMENDED TOOLS:

- Properly rated floor jack
- Support stands
- Wheel chocks
- Metric socket wrench set
- Metric wrench set
- Tape measure
- Marking Pen

### SPECIALTY TOOLS:

- Torque wrench up to 150 ft lbs.



#### Technician note:

Before making any adjustments to your new Belltech coilover, please be sure to loosen the set screw on the lower spring perch. Failure to do so will damage the threads. After the adjustments are made, you may then tighten the set screw to keep the settings in place.



### INSTALLATION PREPARATION:

Before beginning the installation process, measure the hub to fender heights for your vehicle and record them in the “Before” section. After your vehicle has been modified, record the new measurements in the, “After” section. This way, you can compare the resulting height to the original. When taking the measurements, measure vertically from the center of the wheel to the inner edge of the fender.

**Before:**

LF: \_\_\_\_\_

RF: \_\_\_\_\_

LR: \_\_\_\_\_

RR: \_\_\_\_\_



**After:**

LF: \_\_\_\_\_

RF: \_\_\_\_\_

LR: \_\_\_\_\_

RR: \_\_\_\_\_

# JACKING, SUPPORTING, AND PREPARING THE VEHICLE

1. Park your vehicle on a smooth, level, concrete or seasoned asphalt surface.
2. Block the rear wheels of the vehicle using wheel chocks. Make sure the vehicle's transmission is in "PARK" (automatic) or 1st gear (manual).
3. Activate the parking brake.
4. Break loose, but do not spin the wheel lug nuts to ease in removal when the wheels are in the air.
5. Lift the front of the vehicle off the ground using a properly rated floor jack. Lift the vehicle so the front tires are approximately 6-8 inches off the ground.
6. Place support stands rated for the vehicles weight. The stands should be positioned in the factory specified locations (Refer to owners manual). Prior to lowering the vehicle onto stands, make sure the support stands will contact the chassis. It is very important that the vehicle is properly supported to prevent any harm to ones self or to the vehicle.
7. Lower the vehicle slowly onto the stands.
8. Remove the front wheels.

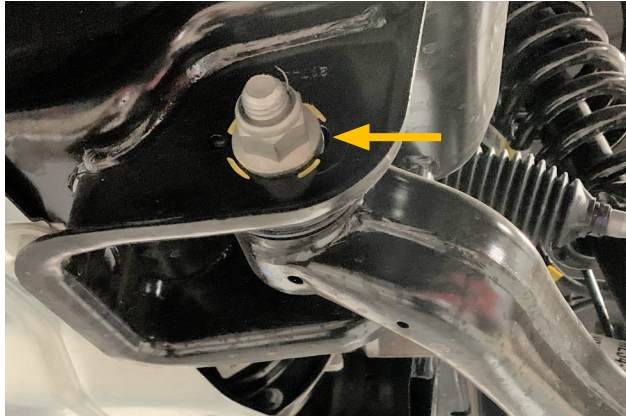


## Technician reminder:

Never work under a vehicle supported only by a jack. It is necessary to place support stands securely under the vehicle in the manufacturer's specified locations unless otherwise instructed.

## OEM STRUT REMOVAL

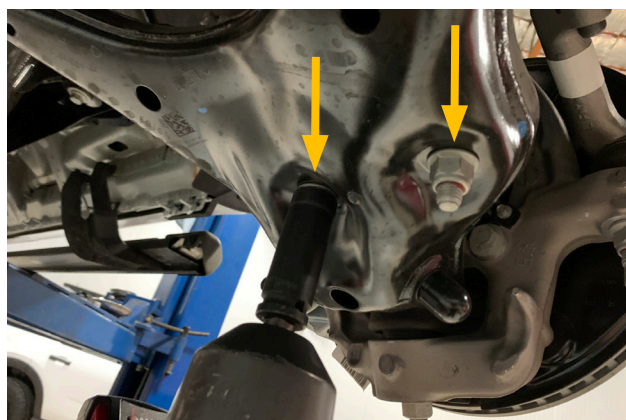
9. Before removing any component, use a marking pen mark the alignment cams to reference placement later.



10. Working on one side at a time, loosen and remove the cross member bolts that connect the lower control arm and frame.

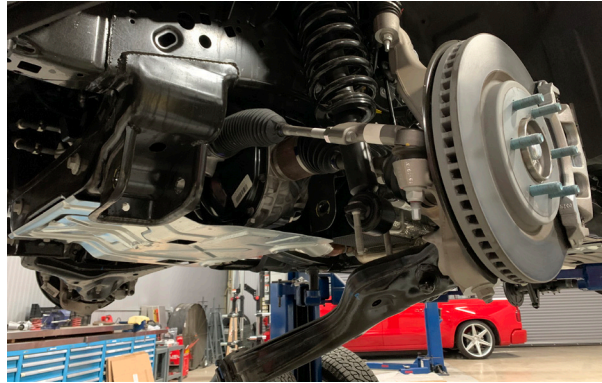


11. Loosen and remove the nuts securing the lower strut mount to the control arm.



## OEM STRUT REMOVAL CONTINUED

12. Push the spindle and lower control arm down and away until the lower shock studs are clear of the control arm.



13. Remove the three flanged nuts using an 18mm wrench, securing the top of the strut to the chassis.

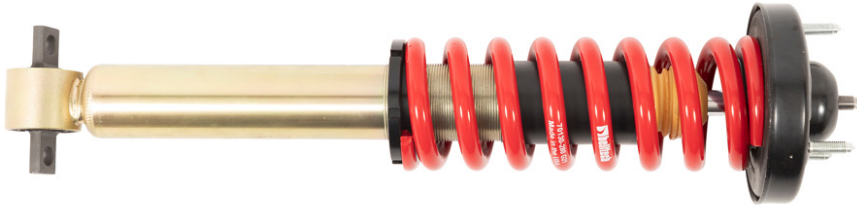


14. Pull the strut assembly out of the chassis strut tower and remove from the vehicle.



# BELLTECH COILOVER HEIGHT SETUP AND ASSEMBLY

15. The us delivered as shown below. Remove the Nyloc nut from the top of the Belltech coilover to proceed.



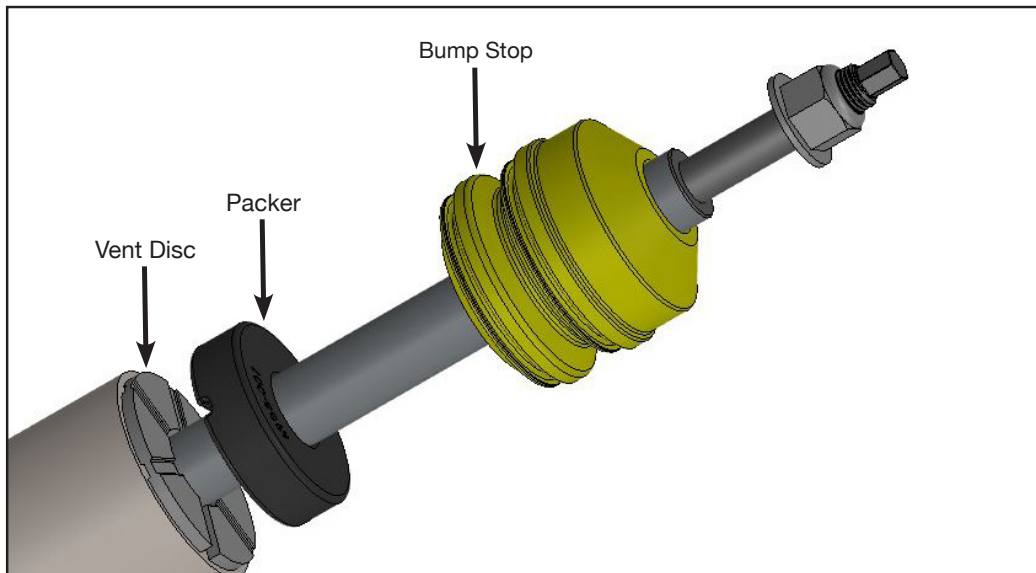
16. Confirm the vent disk is located on the strut, under the dust boot. If for any reason your vent disk is not present, please call our technical support staff before proceeding, driving on the strut without it could cause premature shock to failure.

17. Using the table on page 7 as reference, remove the main spring and slide the 15mm packer onto the strut rod if needed.



## Technician note:

Belltech uses packers to maintain the correct bump stop engagement at various height ranges. Using the appropriate packer will prevent excessive body roll. If a packer is needed, according to the table on page 7, please place the packer on top of the vent disc, channel side down, as shown in the image below this text box.



# BELLTECH COILOVER HEIGHT SETUP AND ASSEMBLY CONTINUED

18. Loosen the set screw on the spring perch.



### Technician note:

When raising your vehicle more than 1", OE camber may not be achievable. Ensure proper toe alignment to minimize tire wear.

19. Use the provided spanner wrench to turn the bottom spring perch to obtain desired spring perch height. Measure from the top of the spring perch to the center of the lower bushing. Find the appropriate spring perch height by referencing the table below. We do not recommend adjusting outside of the specified height range as the performance of the shock may decrease greatly.

2021+ Ford F150 4WD		
Lift (Inches)	Perch height (millimeters/inches)	15mm Packer
3"	335mm / 13.2in	0
4"	352mm / 13.9in	1



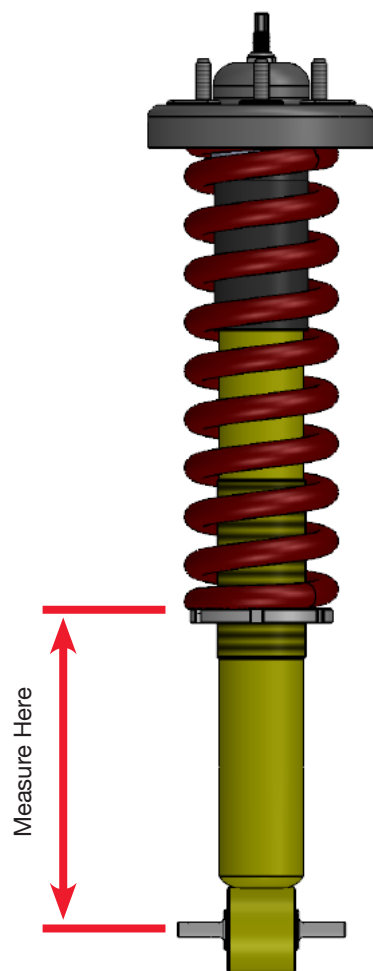
### Technician note:

Your vehicle's exact ride heights may vary due to differences in chassis and trim levels. The perch heights depicted on our tables are a suggested starting point.

20. Tighten the set screw. Do not over tighten the set screw. Max torque is 1-2 Nm (1.5 ft lbs.)

21. Assemble the spring, upper spring seat and supplied top mount onto the Belltech coilover.

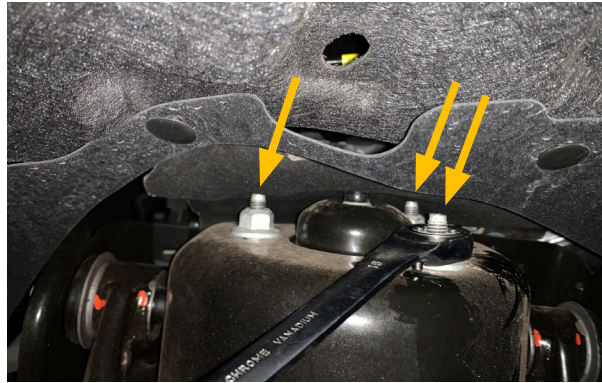
22. Torque the supplied Nyloc nut onto the strut. Torque to 41 ft lbs.





## COILOVER INSTALLATION

23. Install the strut assembly into the chassis strut tower and secure using the 3 OE nuts. Torque the supplied nuts to 52 ft lbs.

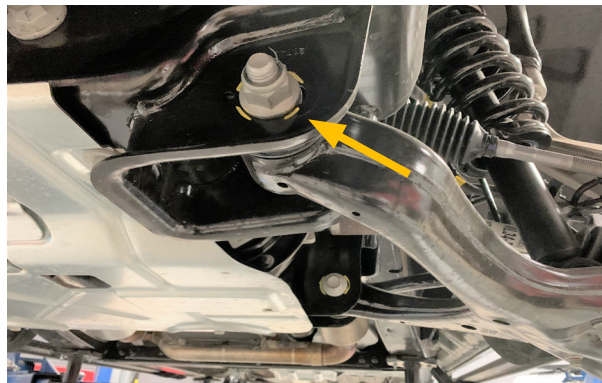


24. Attach the lower coilover mount to the lower control arm using the supplied bolts and Nyloc nuts. Torque the supplied nuts to 66 ft lbs.



25. Reattach the lower control arm to the frame using the OE alignment hardware. Do not tighten or torque until your vehicle is back on the ground. Torque to 258 ft lbs.

26. Set the alignment settings to the markings made before installation.

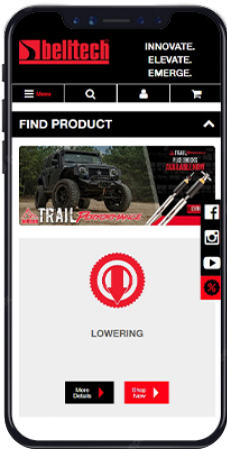


# FINALIZING THE INSTALLATION

27. Mount the wheels and tighten the lug nuts.
28. Lift the vehicle and remove the support stands.
29. Carefully lower the vehicle onto the flat ground.
30. Torque the lug nuts to 150 ft lbs.
31. Check that all components and fasteners have been properly installed and torqued.
32. Read and perform all tasks in the “Before Driving Your Vehicle” section of page 1 of your instructions.

## THANK YOU FOR CHOOSING BELLTECH.

You are now a part of the Belltech family and we are eager to catch a glimpse of your newly modified vehicle. Give us a shout out and let us know how much you love our product. Don't forget, we offer other Belltech related merchandise for you and your vehicle on our website [www.belltech.com](http://www.belltech.com)



[belltechsuspension](https://www.facebook.com/belltechsuspension)



[Belltech Suspension](https://www.youtube.com/BelltechSuspension)



[@belltechsuspension](https://www.instagram.com/belltechsuspension)

If you have any questions, concerns, or warranty related issues regarding your Belltech product, please call or email our experienced customer service specialists.

### Belltech Customer Support:

Phone: 1-800-445-3767

Email: [info@belltech.com](mailto:info@belltech.com)

# KIT CONTENTS



15207		
Part number	Description	Qty
15207-100	Belltech Coilover	2
68510039	Spanner Wrench	1
25007-777	Hardware Kit	2

25007-777 Hardware Kit		
Part number	Description	Qty
112307	Bolt Flanged Hex	2
112308	Flanged Nyloc Nut	2

15207-100		
Part number	Description	Qty
15001-003	Coilover Spring Adapter	1
15001275	Top Mount	1
15002105	Vent Disc	1
65210799	Bump Stop	1
4935-001	15mm Packer	1
65050018	Spring Perch	1
65210800	Dust Boot	1
15207-245	Threaded Damper	1
68320103	Set Screw	1
70130-280-993	Linear Spring	1